

## CASE STUDY

### SMARTSIGHT® TECHNOLOGY OPTIMIZES VISION

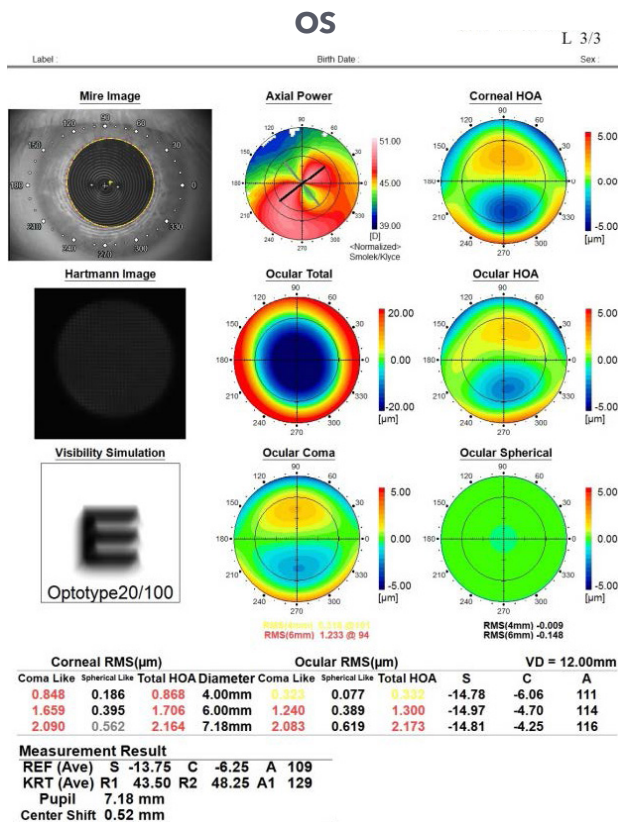
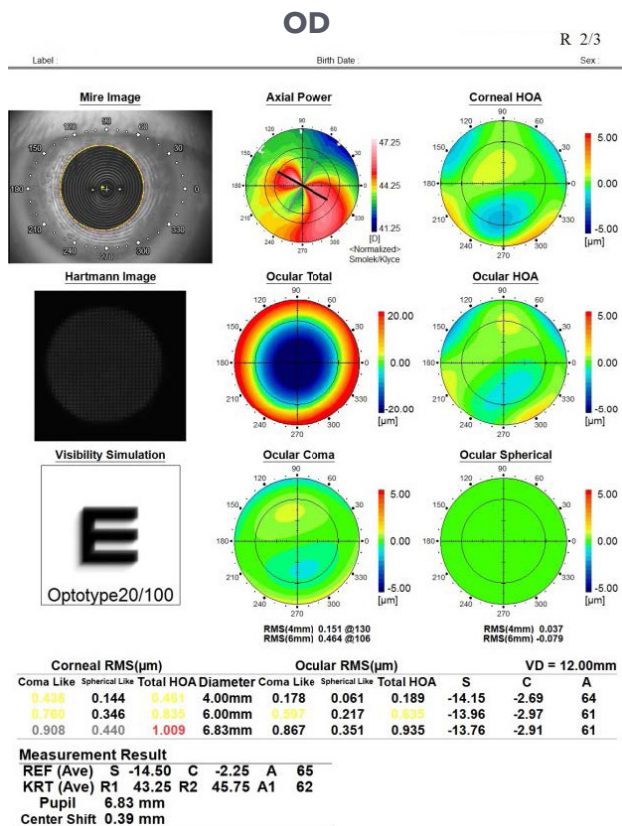
#### BACKGROUND

A 33-year-old female presented with pellucid marginal degeneration OS>OD and myopic degeneration OU. For the past two years she has been wearing mini-scleral lenses of an unknown brand. She is able to wear her lenses all day comfortably, however her vision is not as clear as she would like. In addition, over the past few months she has been receiving treatment in her right eye for myopic macular degeneration. She was referred to us by her retinal specialist to see if we could help her achieve better vision with lenses.

VA with current mini-scleral lenses:

OD 20/250    SOR -1.75 20/70 with shadowing  
 OS 20/60    SOR -1.00 20/30 with shadowing

#### TOPOGRAPHY



**DR. NANCY MCBRIDE**

Professional Vision  
 Care Associates  
 Sherman Oaks, CA

*Dr. Nancy McBride specializes in the fitting of soft and rigid contact lenses, including scleral lenses for patients with severe corneal disease.*

## SCLERAL LENS FITTINGS

### Attempted Standard 17.0 mm scleral lenses:

OD: BCVA 20/60 NI with OR

OS: BCVA 20/60 with heavy shadowing NI with OR

### BostonSight SCLERAL lenses:

OD: 18.5mm / Flat Distribution / 2.8 mm sag / +0.25/ FSE 1

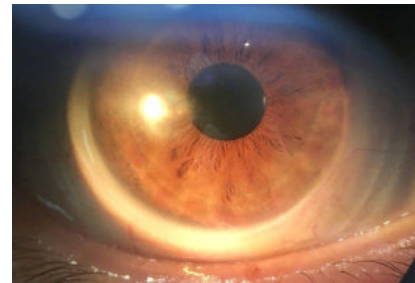
Rx: -10.00 -1.37 x080 BCVA 20/30-

OS: 18.5mm / Flat Distribution / 2.8 mm sag / +0.25/ FSE 1

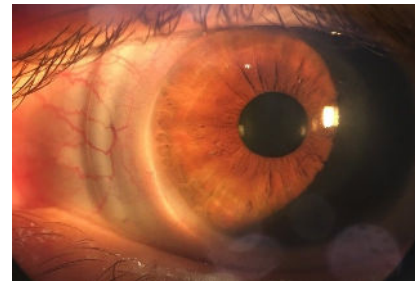
Rx: -10.75 -0.62 x055 BCVA 20/25+

Excellent fit and all day comfort OU with BostonSight SCLERAL.  
Proceeded with BostonSight SCLERAL fitting.

OD



OS



---

## RESULTS

### “Hadh’t seen this well in years.”

The patient was extremely satisfied with her vision in BostonSight SCLERAL and noted she “hadn’t seen this well in years.” We had initially attempted to fit her with a standard 17.0mm scleral lens OU, but her vision never improved beyond 20/60, and subjectively she felt the vision was worse than her old lenses.

With BostonSight SCLERAL, we were able to capitalize on SmartSight technology, and the different front surface eccentricity (FSE) options, which helped to dramatically reduce shadowing and ghosting in her vision. As a result, her vision improved beyond what she thought she was capable of seeing.