

CASE STUDY

USING SCLERAL^{IG} TO OPTIMIZE COMFORT, VISUAL CLARITY, AND EFFICIENCY

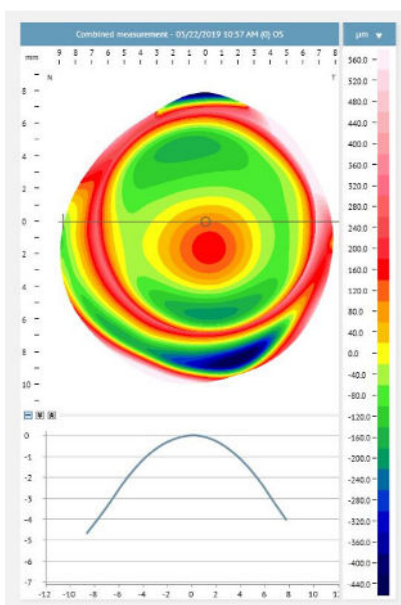
BACKGROUND

Patient is a 44-year-old male paralegal who requires good vision in fast-paced legal office. BVA w/ spectacles 20/70.

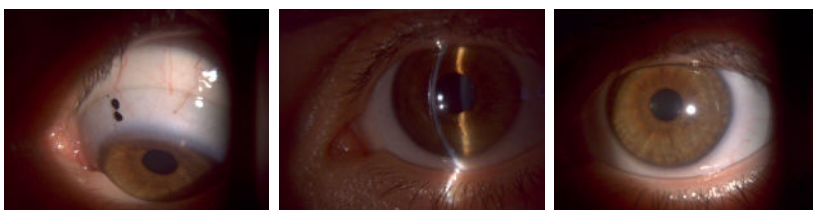
SCLERAL LENS FITTINGS

Patient previously wore 17.0 mm sclerals with poor comfort, mid-day fogging, and vision issues. We refit left eye with SCLERAL^{IG} 18.5 mm using ESP profilometry and FitConnect[®].

Display	
Bisphere elevation	
Tangent angles	
General	
Fit axis (°)	204
Lens	
Supplier	BostonSight
Type	SCLERAL ^{IG} (R-Se1 or L-Se1)
Diameter	18.5
SAAG	0
BC	7.7
Haptic 1	90° +100
Haptic 2	0° -200
Haptic 3	270° -700
Haptic 4	180° -100
Calculate	
Print	
DirectConnect	



Eaglet's DirectConnect software integration with FitConnect allows the image to go straight to the BostonSight manufacturing lab.



DR. BARRY LEONARD

Dr. Barry Leonard & Associates
Panorama City, CA

Dr. Barry Leonard is a therapeutic optometrist trained in the treatment and management of eye diseases, specialty contact lenses, corneal refractive therapy, and pre- and post-operative patient care. His specialties include fitting custom soft contact lenses and scleral lenses for patients with corneal conditions including keratoconus, dry eye, and surgical complications.

Updated 2022: SCLERAL^{IG} preceded BostonSight SCLERAL Smart360[®], which is the current, updated free-form design feature available.

RESULTS

Success with first lens!

Patient was very happy and stated this is the "best lens ever." He wanted to refit the right eye to this larger, better lens design.