

## Before you start

In this guide it is shown how to make good measurements with the ESP step by step. All the steps required to make a good measurement should not take more than 15 minutes. However, a good measurement should significantly reduce chair time and also the number of visits and lens exchanges.

Before starting with the measurements please watch our short video: [https://youtu.be/oDm24k\\_kWi8](https://youtu.be/oDm24k_kWi8).

Please feel free to consult the Eaglet team ([support@eaglet-eye.com](mailto:support@eaglet-eye.com)) if encountering any issues.

0

## Preparation

We recommend using assistance for opening the eyelids widely. If this is not possible, you will need to ask the patient for collaboration opening the eyelid.

### Material needed

- Wetting drop containing hyaluronic acid.
- Anaesthetic drops.
- Fluorescein strips.

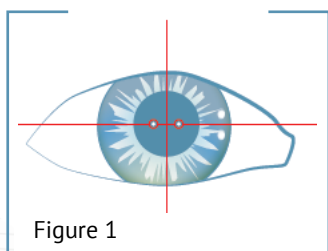
1

## Lubricate the eye

Use wetting agent containing hyaluronic acid. Instill lubricating drop on the eye to be measured, before pre-aligning the device.

2

## Pre-align device

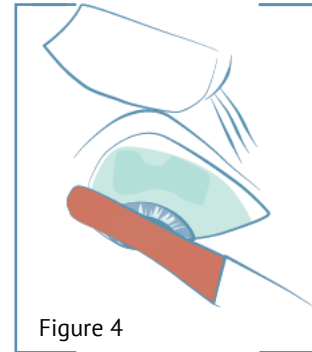
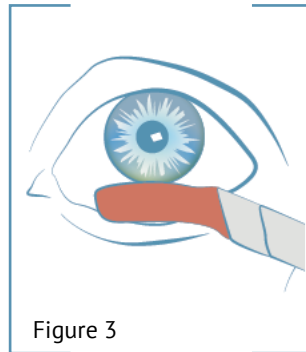
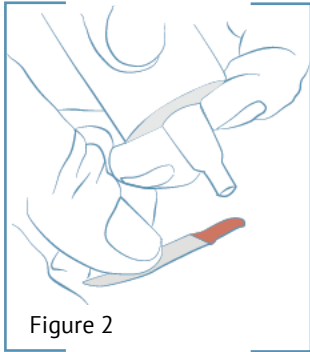


- Ask patient to place head in the chinrest and against the headband.
- Instruct patient to look at the center of the red cross.
- Correct centration is achieved when the red circles on the horizontal cross overlap with the bright Purkinje reflections in the pupil (Figure 1).
- Correct focus is achieved when the two reflections near the limbus are vertically aligned, above each other.

3

## Instill fluorescein

- Instruct patient to remove head from the chinrest and headband.
- Put a single drop on the fluo-strip on the orange part of the strip, just underneath where it crosses over to the white part and allow it to dissolve the fluorescein (Figure 2).
- Point fluorescein strip downwards so the drop slides to the bottom of the orange part on the strip.
- Tell patient to look up and apply fluo on inside lower lid (ask to blink once) (Figure 3).
- Tell patient to look down and apply fluo to superior sclera (ask to blink again) (Figure 4).
- Instill fluo on the superior and temporal part of the eye.
- Visually check if the coverage is good, particularly temporal side.
- Add more fluorescein if needed.



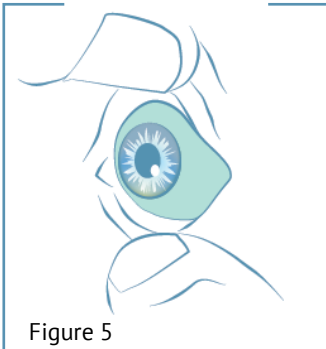
4

#### Dim light and instruct patient

- Instruct patient to place head in the chinrest and against the headband.
- Instruct patient to look straight ahead at the center of the fixation cross.
- Instruct the patient to blink normally.

5

#### Open both eyelids (work with an assistant for the best results)



##### Working in pairs:

- Pull down the lower eyelid.
- Next, ask the patient to look down, exposing the upper eyelid. Place thumb on the upper eyelid and pull it all the way up to the orbital bone, making sure the lashes are out of the way.

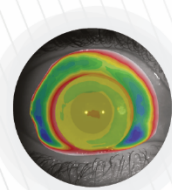
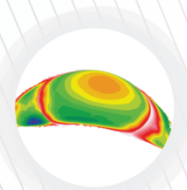
##### Working alone:

- Ask the patient to pull down their lower eyelid.
- Pull up the upper eyelid as described above.

6

#### Final re-align adjustments and fire

- Instruct patient to look at the center of the red cross.
- Quickly re-align the device and click the fire button on top of the joystick **as fast as possible**.
- To take another measurement, click the fire button again to re-activate the camera.
- Allow the patient to blink in between measurements.
- Try and take 3 measurements in one go.
- Next, click on the Save button (top right) to process the measurements.
- Should you want to make extra measurements, re-apply the fluorescein and try again




– Find us online

 scleralfitting.com

 /eagleteye

– Make contact

 +31 6 23 941 643

 support@eaglet-eye.com

eaglet-eye.com